

Arabesque Etc.



DANCE STUDIO

Today's Date: _____

Child Name: _____ Parent Name: _____

Childs Class(es): _____

Address: _____

City: _____ State: _____ Zip: _____

Tel: _____ Email: _____

LEOTARD, TIGHTS & ACCESSORIES ORDER FORM

Please see sizing below and measure to assure you get the correct size. We have measuring tape at the studio, or use string and a ruler. See p. 3 for size charts, or they are posted at the studio.

LEOTARDS (ALL CLASSES)		Qty	Size	Color	Price	Total
A	Cotton Tank Leotard \$ 14 child sizes \$ 21 adult sizes					
B	Cotton Wide-Strap Leotard \$ 14 child sizes \$ 21 adult sizes					
C	Cotton Camisole Leotard \$ 14 child sizes \$ 21 adult sizes					
D	Nylon Tank Leotard \$ 14 child sizes \$ 21 adult sizes					
E	Nylon Scoop Camisole Leotard \$ 16 child sizes \$ 21 adult sizes					
				<i>Sorry, not available in light blue for Beginner 3 Ballet</i>		
F	Nylon Pinch-Front Camisole Leotard \$ 16 child sizes \$ 21 adult sizes					
TEEN, POINTE PREP 2, POINTE & ADVANCED		Qty	Size	Color	Price	Total
G	Nylon Twist-Back Camisole Leotard \$ 21 child sizes \$ 25 adult sizes					
TEEN, POINTE 3 & ADVANCED		Qty	Size	Color	Price	Total
H	Double-Strap Camisole Leotard \$ 25 adult sizes					
I	Pinched V-Back Short Sleeve Leotard \$ 25 adult sizes					
				<i>Available late Sept/early Oct</i>		
TIGHTS & HAIR KITS		Qty	Size	Color	Price	Total
J	Hair Kits: \$ 5 (includes: 2 nets, hairpins & 2 hair ties)					
<i>TIGHT SIZES: Toddler Child: CS, CM, CI, CL Adult: AS, AM, AL, AXL</i>						
K	Balera Tights: \$ 8 footed \$ 10 convertible					
L	BodyWrappers Tights: \$17 convertible \$18 conv. w/seam					

Orders are placed on September 15th and October 15th. Please measure for correct sizing. If the item does not fit, return to the studio (in a ziploc bag with your name and new size you need) by Oct 1/Nov 1, and we will send all the exchanges together. Sorry, we cannot take exchanges after these dates.

Free Shipping!

- Check Enclosed
- Bill my account

ALL CLASSES

Cotton Tank



Cotton Wide-Strap
with princess seams



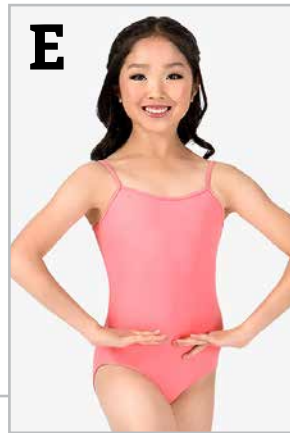
Cotton Cami



Nylon Tank



Nylon Scoop Cami



Nylon Pinch-Front Cami



Not available in light blue
for Beginner 3 ballet

Pointe Prep 2 & up

Nylon Twist Back
Camisole Leotard



Pointe 3 & Advanced

Cotton/Lycra
Double Strap Leotard



Pinched V-Back
Short Sleeve Leotard



CLASS LEOTARD COLORS

Tiny Tots: Any color

Intro to Dance: Light Pink

Beginner Ballet

Level 1: Lavender

Level 2: Dark Pink / Carnation

Level 3: Light Blue

Intermediate Ballet

Level 1: Turquoise

Level 2: Royal Blue

Pointe Prep Ballet

Level 1: Garnet

Level 2: Coral / Watermelon

Pointe Ballet

Level 1: Burgundy/Eggplant

Level 2: Dark Teal/Hunter

Level 3: Periwinkle/Amethyst

Interm / Advanced Ballet

Black

Teen/Adult Ballet

Periwinkle / Lavender

J

HAIR KITS \$5

2 nets, hairpins

2 hair ties

K

TIGHTS

balera



available in pink & nude

footed: \$ 8/pair

convertible: \$ 10/pair

L

Body Wrappers

designed to be more durable



available in pink & tan

convertible: \$ 17/pair

conv. w/ seam: \$ 18/pair

TIGHT SIZES

CHILD TIGHTS

Children's Tights															
T	SC	IC	MC	LC											
ht./lbs.	25	30	35	40	45	50	55	60	65	70	75	80	85	90	95
32"															
34"															
36"	T														
38"															
40"															
42"															
44"															
46"															
48"															
50"															
52"															
54"															
56"															
58"															
60"															
62"															

ADULT TIGHTS

Adult Tights																		
SA	MA	LA	XLA															
ht./lbs.	90	95	100	105	110	115	120	125	130	135	140	145	150	155	160	165	170	175
4'10																		
4'11																		
5'0																		
5'1																		
5'2																		
5'3																		
5'4																		
5'5																		
5'6																		
5'7																		
5'8																		
5'9																		
5'10																		
5'11																		
6'0																		
6'1																		
6'2																		

CLASS LEOTARD COLORS

Tiny Tots: Any color

Intro to Dance: Light Pink

Beginner Ballet

Level 1: Lavender

Level 2: Dark Pink / Carnation

Level 3: Light Blue

Intermediate Ballet

Level 1: Turquoise

Level 2: Royal Blue

Pointe Prep Ballet

Level 1: Garnet

Level 2: Coral / Watermelon

Pointe Ballet

Level 1: Burgundy/Eggplant

Level 2: Dark Teal/Hunter

Level 3: Periwinkle/Amethyst

Interm / Advanced Ballet

Black

Teen/Adult Ballet

Periwinkle / Lavender

CHILD LEOTARD SIZES

Size	Girth	Size Range
XSC	36-40"	4-5
SC	40-44"	6-6X
IC	44-47"	7-8
MC	47-51"	10-12
LC	51-55"	14

ADULT LEOTARD SIZES

Size	Girth	Size Range
SA	56-60"	2-4-6
MA	60-63"	8/10
LA	63-66"	12/14
XLA	66-69"	16/18



To measure girth, place tape measure on center of right shoulder, run through crotch and back to right shoulder loosely (as shown in diagram).

When in doubt, let the girth measurement determine size.

Arabesque Etc.



DANCE STUDIO